



MEDIUM ENTERPRISE SOLUTION

TBS – TOUCHLESS BIOMETRIC SYSTEMS
SWITZERLAND
tbs@tbs-biometrics.com / www.tbs-biometrics.com

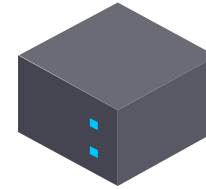


MEDIUM ENTERPRISE SOLUTION

Requirements for access and time & attendance solutions vary according to company size. That's why Swiss biometric solution provider TBS tailors its comprehensive range of hardware and software products to different user groups:

- Small Enterprise Solution for small companies with a maximum of 100 employees
- Medium Enterprise Solution for companies with up to 1000 employees
- Unlimited Enterprise Solution for companies preferring an individual, customizable solution

The introduced Medium Enterprise Solution is designed to meet the fundamental needs of medium-sized enterprises looking for a simple yet extendable solution. It covers an installation of up to 25 devices and 1,000 users.



SERVER PACKAGE

 1000  25

BASIC

- MiniServer
- Web-based BioManager software
- 4 enrollment options
- 5 zones and schedules
- TBS Care for life-long support

EXTENSIONS

- Rights management with unlimited zones and schedules
- Video integration
- Virtual anti-tailgating
- (Silent) alarm, based on user actions
- Alarm device management
- Individually designed terminal display

DEVICE PORTFOLIO

The Medium Enterprise Solution is compatible with all TBS access and T&A readers. The following devices are particularly popular:

- 3D-Terminal with 5-inch display and touchless 3D finger recognition
- 2D-Terminal Multispectral with 5-inch display and multispectral finger recognition
- 2D-Terminal with 3.5-inch display and optical 2D finger recognition
- 2D-Station with optical 2D finger recognition and RFID reader

The touch display offers various ways of user interactions (e.g. password entry, pre-selection of T&A functions, use of alarm systems, triggering the door bell, displaying or calling up information). As an add-on to biometrics, the terminals can optionally be equipped with an RFID reader.

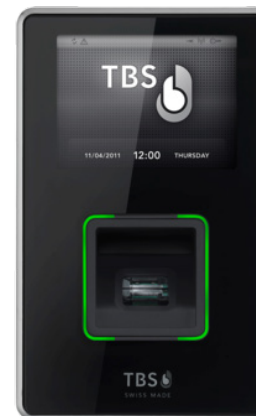
Please consult the TBS device datasheets for further details.



**3D
TERMINAL**



**2D
TERMINAL
MULTISPECTRAL**



**2D
TERMINAL**



**2D
STATION**



BASIC SERVER PACKAGE

The solution is built around a pre-installed and pre-configured MiniServer. This powerful small PC manages the central database and synchronizes all data between server and network devices.

The Mini Server can connect up to 25 devices from TBS's wide-ranging portfolio. Any combination is possible, as the devices share the same look and feel and come with similar user interfaces and configuration options.

The Basic Server Package features five zones with schedules. Depending on your needs, the users' biometric data can be captured centrally, locally, remotely or by mobile. BioManager Mobile – a practical app for smartphones and tablets (android and iOS) – is available for the latter. However, administration is usually handled via the BioManager software featured overleaf.

MINI SERVER

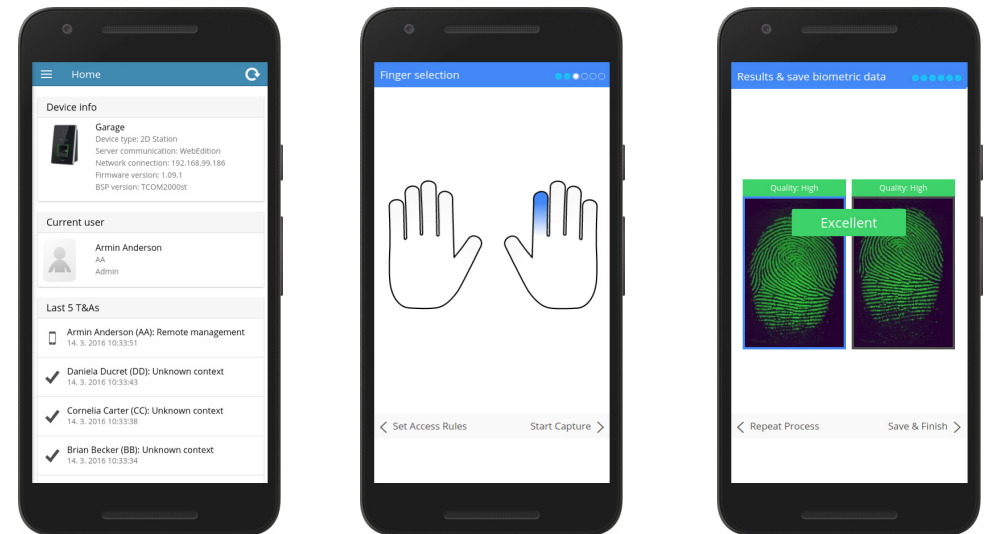


Automatically connects to up to 25 TBS devices and synchronizes all data in the system.

Scope of delivery
Intel Bay Trail M Celeron Quad Core, 1.83 GHz, 2 GB RAM, Gigabit Ethernet, power supply

BIO MANAGER MOBILE

BioManager Mobile establishes a connection to the device via Bluetooth. The smartphone and tablet app enables mobile enrollment.





BIO MANAGER SOFTWARE

BioManager is a web-based, highly intuitive and extendable management software, pre-installed and pre-configured on the MiniServer. The following functions are activated as part of the Basic Server Package:

- Convenient administration of user data
- Central management and configuration of readers
- Web enrollment, remote enrollment
- Assignment of user rights (5 zones and schedules included)
- Documentation of all access and time events

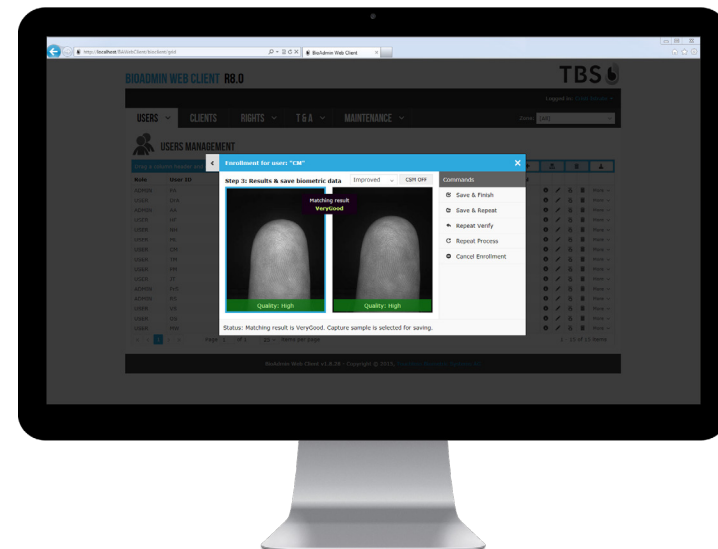


Alternatively the software can be hosted on a Cloud Server. Please consult the TBS Cloud Services document for further information.

USER MANAGEMENT



REMOTE ENROLLMENT





OPTIONAL EXTENSIONS

The Basic Server Package addresses the main needs of medium-sized enterprises. Various optional modules with extended functionality are available for those with higher requirements.



EXTENDED RIGHTS MANAGEMENT

If five zones and schedules coming with the Basic Server Package are not sufficient, rights management can easily be extended.



VIDEO-INTEGRATION

Any IP-compatible camera can be connected. Video sequences are analyzed via the logbook.



VIRTUAL ANTI-TAILGATING

Virtual anti-tailgating makes sure that only one person at a time can gain entry.



USER ACTIONS

Every trigger (e.g. a certain finger or code) can be assigned to a pre-defined action (e.g. a silent alarm).



ALARM DEVICE MANAGEMENT

Allows you to activate or deactivate any alarm system and to monitor the alarm system and door status.



INDIVIDUALLY DESIGNED TERMINAL DISPLAY

From integration of your company logo to an individually designed user interface: create your display entirely to suit your preferences.